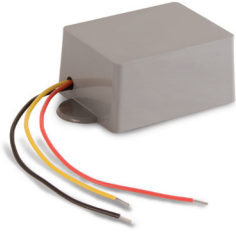


ALARM ANCILLARIES**NS-2 - Nightshift Backalarm cut-out switch****0334****NS-3 - Nightshift Backalarm cut-out switch (auto gear box)****0974**

- **12-24 Volts**
- **IP68**
- **2 year warranty**

Features

- Double engage reverse gear to cut out Backalarm
- Resets when reverse gear disengaged (longer time delay for NS-3)
- No wiring necessary to cab

Durability and Standards

- CE marked
- EMC approved

Brigade Electronics Inc
226 S.Meridian St, Portland, IN 47371 USA
Tel: +1 (260) 766-4343 email: infousa@brigade-electronics.com
www.brigade-inc.com

